



CellTrics®
Preparing Cell Suspensions Without Strain
Innovative Cell Strainers for Rapid Sample Preparation



Reaching measurement goals requires homogeneous samples



Preparing great samples for cell culture or measurement by flow cytometry or cell separation columns is not as easy as it may sound. There are two things you have to get right: minimizing interference and noise, and separating the distinct cell populations.

The end goal is to remove tissue debris, aggregates and artifacts, and to single out the cells needed to deliver a homogeneous cell suspension.

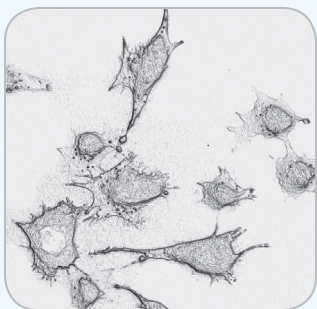
- Ploidy analysis requires the efficient isolation of cell nuclei for measurement results to meet your accuracy requirements.
- You must apply the same level of diligence for generating successful cell cultures, whether stem, blood or neuronal cell.

The bottom line: You need a great cell strainer!

Your cell material is valuable

A key challenge with any strainer or filter is that the sample has to pass through a filtering device without losing too much of its mass. You must avoid overflows and any residue forming above the mesh. You have to handle large volumes of liquids so the cell strainer has to work within an acceptable timeframe to avoid it becoming a tedious effort.

The bottom line: You want a device that works quickly, effectively, and safely!



CellTrics are a ‘strainer’ without the ‘strain’

We looked at all of these issues and then developed the revolutionary CellTrics cell strainers. Sysmex has achieved an extremely high flow rate by sloping the filter gauze vertically and adding the patented ventilation hole. This ensures more comprehensive cell filtration as it minimizes cell loss in the residue. It is also gentler on the cells, which tend to dry out less.

To help prevent spills and allow comfortable pipetting volumes, Sysmex added a 2 mL reservoir above the mesh.

Sysmex also designed CellTrics to make sure they fit safely on tubes of different diameters, making them flexible and easy to use.

CellTrics are available in seven different mesh sizes, as sterile and non-sterile versions—and their color-coding clearly indicates the correct mesh to use.

Sysmex CellTrics integrate perfectly into your workflow

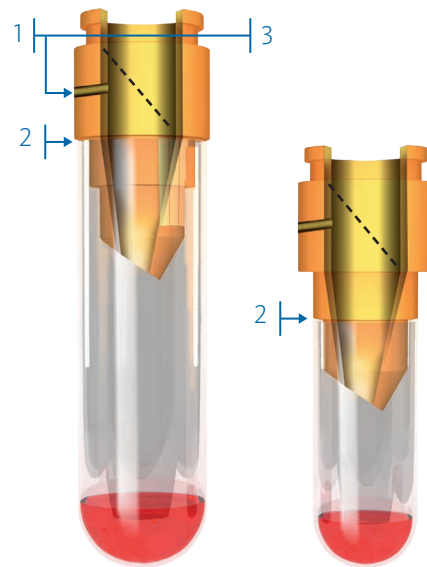
CellTrics fit neatly within your existing workflow and it's this easy:

- First, prepare your sample suspension as usual (from tissue, fluids, plant material, etc.).
- Then select the mesh size you need and place the CellTrics disposable filter on a sample tube of your choice and filter the sample suspension directly into the sample tube.
- Lastly, place the sample tube on a flow cytometer or cell sorter for measurement, or proceed with the sample for cell culture.



Specifications

- CellTrics disposable strainers are available in sterile (single-packed) and non-sterile versions.
- Seven different mesh sizes are available – 5 (upon request), 10, 20, 30, 50, 100 and 150 μm – to find the optimal diameter for your samples.
- Color coding lets you easily differentiate between mesh size:



1. Vertically sloped filter gauze and ventilation hole deliver an extremely high flow rate. The filter gauze is made from high-quality unifilar polyamide or polyester.
2. CellTrics fit safely on 3 – 15 mL tubes of different diameters thanks to two different rest areas.
3. 2 mL sample reservoir above the filter gauze delivers comfortable filtration of larger volumes.

Ordering Information

Order number	Type	Color	Quantity
	Non-sterile		
04-0042-2314	CellTrics 10 µm	black	250 pcs.
04-0042-2315	CellTrics 20 µm	red	250 pcs.
04-0042-2316	CellTrics 30 µm	green	250 pcs.
04-0042-2317	CellTrics 50 µm	yellow	250 pcs.
04-0042-2318	CellTrics 100 µm	blue	250 pcs.
04-0042-2319	CellTrics 150 µm	white	250 pcs.
	Sterile		
04-004-2324	CellTrics 10 µm, sterile	black	50 pcs.
04-004-2325	CellTrics 20 µm, sterile	red	50 pcs.
04-004-2326	CellTrics 30 µm, sterile	green	50 pcs.
04-004-2327	CellTrics 50 µm, sterile	yellow	50 pcs.
04-004-2328	CellTrics 100 µm, sterile	blue	50 pcs.
04-004-2329	CellTrics 150 µm, sterile	white	50 pcs.

To place an order:

Online: www.sysmex.com/flowcytometry
 Email: cytometry@sysmex.com
 Call Customer Service: Toll-free: 888-808-0067; Canada 905-366-7900

Unless indicated otherwise, all products listed are For Research Use Only. Not for use in diagnostic or therapeutic procedures. Not all products are available in all regions.

Sysmex Corporation
 1-5-1-Wakinohama-Kaigandori
 Chuo-ku, Kobe 651-0073, Japan
 Tel. +81 (78) 265-0521
www.sysmex.co.jp

Sysmex America, Inc.
 577 Aptakisic Road
 Lincolnshire, IL 60069, U.S.A.
 Tel. +1 (800) 379-7639
www.sysmex.com/us

Sysmex Canada, Inc.
 5700 Explorer Drive
 Suite 200,
 Mississauga, ON L4W0C6
 Canada
 Tel. +1 (905) 366-7900
www.sysmex.ca

Sysmex Latin America and
 the Caribbean
 Rua Joaquim Nabuco 615 -
 Bairro Cidade Jardim
 São José dos Pinhais
 Paraná – Brasil – CEP 83040-210
 Tel. +55 (41) 2104-1314
www.sysmex.com/la