

Instrument Setup and Sample Preparation Reagents

XF-1600™ Flow Cytometer

Sysmex is committed to being a complete solutions partner for your flow cytometry applications. The XF-1600* offers laboratories a distinctive and innovative flow cytometry system for robust data collection. Explore the reagents for daily maintenance of the XF-1600 and lyse/fix solutions for sample processing.



CyFlow™ CLEAN



Product number: AG359631
Regulatory Status: IVD

CyFlow CLEAN is intended for use by trained laboratory personnel in the cleaning of fluidics, the sample probe and flow cell for the XF-1600. It is also compatible with the Sysmex PS-10™ Sample Preparation System.

CyFlow™ SHEATH



Product number: CG974836
Regulatory Status: RUO

CyFlow SHEATH is used to ensure samples run under controlled conditions using the principle of hydrodynamic focusing to let particles pass through the flow cell in order. Refer to the cytometer manual for additional information.

CyFlow™ Single Color RUO Antibodies for Flow Cytometry Applications



**For Research Use Only. Not for use in diagnostic procedures. RUO instruments must be validated before use in clinical practice.*

Sample Preparation Solutions

CyLyse™ LV



Product number: CF552434
Regulatory Status: RUO

CyLyse LV is a lysing solution used in the preparation of biological samples from human peripheral blood after staining leukocytes with fluorochrome-conjugated antibodies prior to flow cytometry analysis. It is appropriate for use when viable leukocytes are required after red blood cell lysis.

CyLyse™ FX



Product number: AX032552
Regulatory Status: RUO

CyLyse FX is a lysing solution with a fixative used in the preparation of biological samples from human peripheral blood after staining leukocytes with fluorochrome-conjugated antibodies prior to flow cytometry analysis.

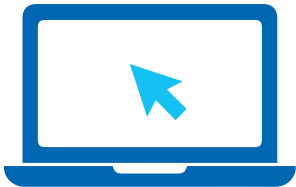
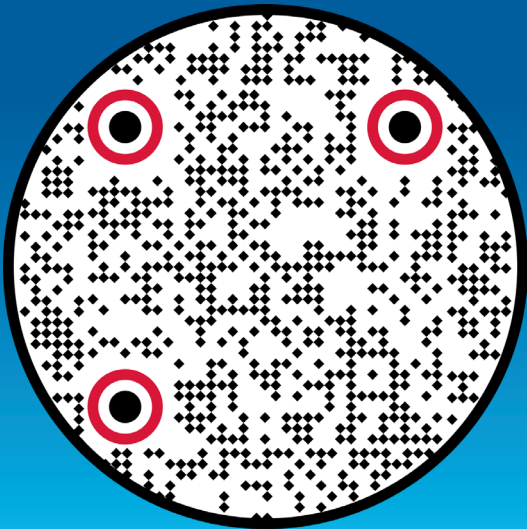
CyLyse™ FXP



Product number: AE238377
Regulatory Status: RUO

CyLyse FXP is a set of two ready-to-use reagents, Fixation and Permeabilization Buffer. This kit is used in fixing and permeabilizing the cytoplasmic membrane of leukocytes. It is also used for red blood cell lysis in preparing biological samples from human peripheral blood after staining leukocytes with fluorochrome-conjugated antibodies prior to flow cytometry analysis.

Scan the QR code for more information and to order.



Visit www.Sysmex.com/FlowCytometry

**For Research Use Only. Not for use in diagnostic procedures. RUO instruments must be validated before use in clinical practice.*