

Reagents and Controls

XF-1600™ Flow Cytometer



Sysmex is committed to being a complete solutions partner for your flow cytometry applications. The XF-1600* offers laboratories a distinctive and innovative flow cytometry system for robust data collection. Explore the reagents for daily maintenance of the XF-1600 and lyse/fix solutions for sample processing.

Instrument Consumables

CyFlow™ CLEAN



Product number: AG359631
Regulatory Status: IVD

CyFlow CLEAN is intended for use by trained laboratory personnel in the cleaning of fluidics, the sample probe and flow cell for the XF-1600. It is also compatible with the Sysmex PS-10 Sample Preparation System.

CyFlow™ SHEATH



Product number: CG974836
Regulatory Status: RUO

CyFlow SHEATH is used in the running of the XF-1600 flow cytometer to ensure that samples run under controlled conditions and uses the principle of hydrodynamic focusing to let particles pass through the flow cell in order. It is recommended to refer to the cytometer manual for additional information.

CyFlow™ Single Color RUO Antibodies for Flow Cytometry Applications



Sample Preparation Solutions

CyLyse™ LV



Product number: CF552434

Regulatory Status: RUO

CyLyse LV is a lysing solution used in the preparation of biological samples from human peripheral blood after staining leukocytes with fluorochrome-conjugated antibodies prior to flow cytometry analysis. It is appropriate for use when viable leukocytes are required after red blood cell lysis.

CyLyse™ FX



Product number: AX032552

Regulatory Status: RUO

CyLyse FX is a lysing solution with a fixative used in the preparation of biological samples from human peripheral blood after staining leukocytes with fluorochrome-conjugated antibodies prior to flow cytometry analysis.

CyLyse™ FXP

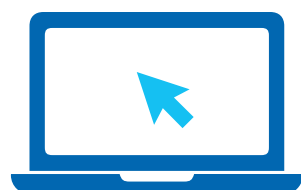
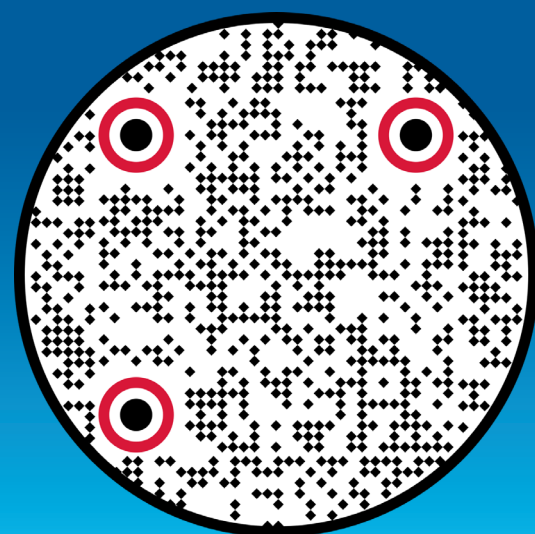


Product number: AE238377

Regulatory Status: RUO

CyLyse FXP is a set of two ready-to-use reagents, Fixation and Permeabilization Buffer. This includes fixing and permeabilizing of the cytoplasmic membrane of leukocytes and is used for red blood cell lysis in the preparation of biological samples from human peripheral blood after staining leukocytes with fluorochrome-conjugated antibodies prior to the flow cytometry analysis.

Scan QR code for information on
Instrument Setup and Sample Preparation



Visit www.us.sysmex-flowcytometry.com to
learn more about flow cytometry products